



Product name : Polypropylene flush cistern DOT series pneumatic actuation
Code : CSTDOT0201200
Weight : 4 kg
Dimension (LxWxH) : 59 x 16.6 x 52.5 cm

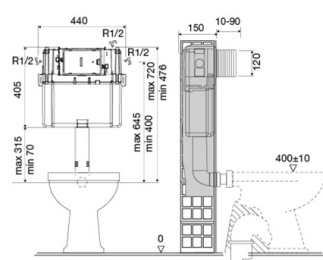
DESCRIPTION

Polypropylene cistern WC **DOT** collection. Mechanical actuation. Direct is ideal for floor-standing toilets and is suitable for under window and low applications with drywall, light-walls, masonry and solid-walls that are brick lined. Flush plate can be installed on top or on the front of the cistern. It comes equipped inlet valve has a delayed opening system, it only opens the water after the flush valve closes. This system allows a water saving of up to 0.5 liters on average with each full flush, resulting in a daily average saving of 9 liters.

Available versions: mechanical actuation (1), pneumatic actuation (2).

FEATURES: MADE IN ITALY, modern design, polypropylene cistern WC, dual flush 4/2 I (adjustable to 7/3 I), mechanical actuation, class A+ water efficiency, equipped with azor plus inlet valve with delayed refilling, supplied with anti-condensation lining, 150 mm thickness, 315 mm flush pipe, G 1/2" stop valve, WC connection pipe Ø 4,5 cm, 5 years warranty and packaging in single box.

Products and accessories available



PLCPAC0010105
Stainless steel
control plate
PACIFIC series



PLCMON0010301
ABS control plate
MONET series



PLCPRTL010401
Tempered glass
control plate
PRETTY TWO
series



PLCSLI0010301
ABS control plate
SLICK series



PLCTOXL010401
Tempered glass
control plate TOXIC
series



PLCELIL010401
Tempered glass
control plate ELISIR
series



PLCELOL010401
Tempered glass
control plate ELISIR
ONE series



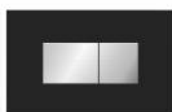
PLCPAO0010105
Stainless steel
control plate
PACIFIC ONE series



PLCCAO0010301
ABS control plate
CANDY ONE series



PLCKAO0010301
ABS control plate
KARMA ONE series



PLCRAOS010304
ABS control plate
RELAX ONE series

ARCA CONCEPT S.r.l.

Via del Mella, 19/21

IT - 25131 Brescia

T. +39 030 7281057

Email: info@arcaconcept.com

www.arcaconcept.com



Product name : Polypropylene flush cistern DOT series mechanical actuation

Code : CSTDOT0201100

Weight : 4 kg

Dimension (LxWxH) : 59 x 16.6 x 52.5 cm

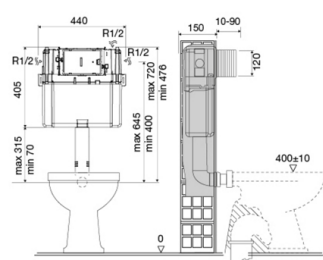
DESCRIPTION

Polypropylene cistern WC **DOT** collection. Mechanical actuation. Direct is ideal for floor-standing toilets and is suitable for under window and low applications with drywall, light-walls, masonry and solid-walls that are brick lined. Flush plate can be installed on top or on the front of the cistern. It comes equipped inlet valve has a delayed opening system, it only opens the water after the flush valve closes. This system allows a water saving of up to 0.5 liters on average with each full flush, resulting in a daily average saving of 9 liters.

Available versions: mechanical actuation (1), pneumatic actuation (2).

FEATURES: MADE IN ITALY, modern design, polypropylene cistern WC, dual flush 4/2 l (adjustable to 7/3 l), mechanical actuation, class A+ water efficiency, equipped with azor plus inlet valve with delayed refilling, supplied with anti-condensation lining, 150 mm thickness, 315 mm flush pipe, G 1/2" stop valve, WC connection pipe Ø 4,5 cm, 5 years warranty and packaging in single box.

Products and accessories available



PLCPAC0010105
Stainless steel
control plate
PACIFIC series



PLCMON0010301
ABS control plate
MONET series



PLCPRTL010401
Tempered glass
control plate
PRETTY TWO
series



PLCSLI0010301
ABS control plate
SLICK series



PLCTOXL010401
Tempered glass
control plate TOXIC
series



PLCELIL010401
Tempered glass
control plate ELISIR
series



PLCELOL010401
Tempered glass
control plate ELISIR
ONE series



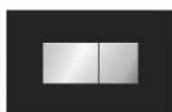
PLCPAO0010105
Stainless steel
control plate
PACIFIC ONE series



PLCCAO0010301
ABS control plate
CANDY ONE series



PLCKAO0010301
ABS control plate
KARMA ONE series



PLCRAOS010304
ABS control plate
RELAX ONE series

ARCA CONCEPT S.r.l.

Via del Mella, 19/21

IT - 25131 Brescia

T. +39 030 7281057

Email: info@arcaconcept.com

www.arcaconcept.com