

Product name : Stainless steel shower head 1 jet EDITH series 500 x 500 x 2 mm

Code : SHDEH50501205

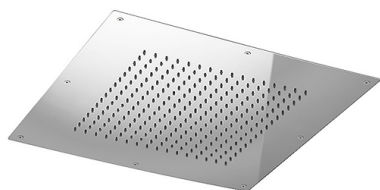
Weight : 0 kg

Dimension (LxWxH) : 52 x 52 x 17 cm

DESCRIPTION

Stainless steel 304 L shower head, 1 jet **EDITH** collection with modern design. Square shape 500 x 500 mm and 2 mm thickness. It can be used for ceiling application. This shower head is equipped with 256 anti-limescale rubber nozzles with a conical shape easy to clean. System recessed supporting frame with safety cables in stainless steel to be anchored to the ceiling. Connection ½" M.

FEATURES: MADE IN ITALY, ceiling application, modern design, shower head 1 jet, square shape 500 x 500 mm, 2 mm thickness, stainless steel, 256 rubber nozzles limescale, easy to clean thermoplastic rubber badaflex 55 shore, connection ½" F, designed for a low water consumption, high performance with low pressure, flow, filter grid and flow limiter 16 lt/min on request, 5 years warranty, single box packed.



Products and accessories available



SHDDA28281207

Polish stainless steel shower head 1 jet DALILA series 280 x 280 x 2 mm



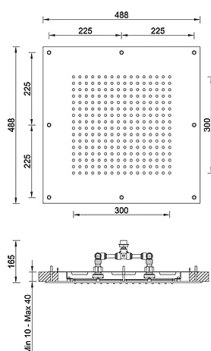
SHDEN40401207

Polish stainless steel shower head 1 jet ELEN series 400 x 400 x 2 mm



SHDEO40401207

Polish stainless steel shower head 1 jet ELSON series 400 x 400 x 2 mm



ARCA CONCEPT S.r.l.

Via del Mella, 19/21

IT - 25131 Brescia

T. +39 030 7281057

Email: info@arcaconcept.com

www.arcaconcept.com