

Product name : Adjustable sensoft system stainless steel hinge H2801 wingnut

Code : SWCHNG2801001

Weight : 0 kg

Dimension (LxWxH) : 4 x 4 x 10 cm

DESCRIPTION

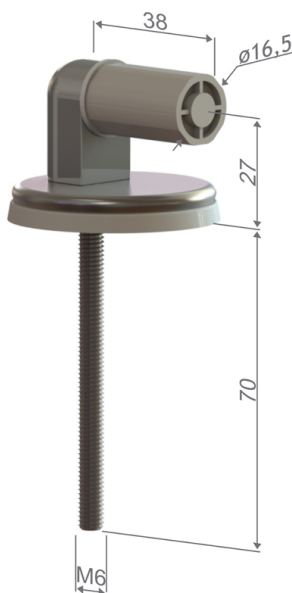
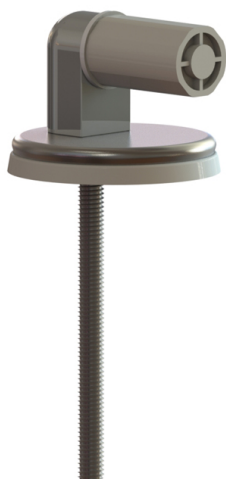
Adjustable sensoft system stainless steel hinge, model **H28**. Stainless steel M6 screws.

Set composed by anti-slip sub-rosette, stainless steel screws and fixing material.

All **ARCA** hinges are interchangeable with all our toilet seats' models

TIPS FOR INSTALLATION:

If, during installation, difficulties in screwing may arise, do not strain the screw but unscrew it and then start the process again to let the hinge assembling properly.



ARCA CONCEPT S.r.l.

Via del Mella, 19/21

IT - 25131 Brescia

T. +39 030 7281057

Email: info@arcaconcept.com

www.arcaconcept.com

Product name : Adjustable sensoft system stainless steel hinge H2802 vario speed

Code : SWCHNG2802001

Weight : 0 kg

Dimension (LxWxH) : 4 x 4 x 10 cm

DESCRIPTION

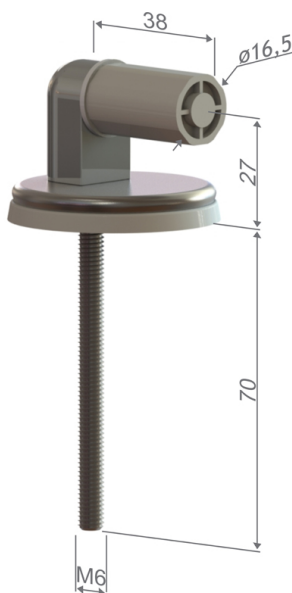
Adjustable sensoft system stainless steel hinge, model **H28**. Stainless steel M6 screws.

Set composed by anti-slip sub-rosette, stainless steel screws and fixing material.

All **ARCA** hinges are interchangeable with all our toilet seats' models

TIPS FOR INSTALLATION:

If, during installation, difficulties in screwing may arise, do not strain the screw but unscrew it and then start the process again to let the hinge assembling properly.



ARCA CONCEPT S.r.l.

Via del Mella, 19/21

IT - 25131 Brescia

T. +39 030 7281057

Email: info@arcaconcept.com

www.arcaconcept.com

Product name : Adjustable sensoft system stainless steel hinge H2803 professional

Code : SWCHNG2803001

Weight : 0 kg

Dimension (LxWxH) : 4 x 4 x 10 cm

DESCRIPTION

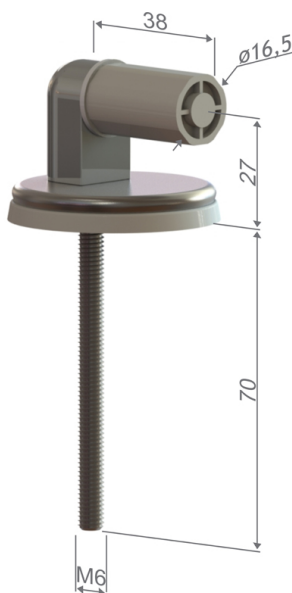
Adjustable sensoft system stainless steel hinge, model **H28**. Stainless steel M6 screws.

Set composed by anti-slip sub-rosette, stainless steel screws and fixing material.

All **ARCA** hinges are interchangeable with all our toilet seats' models

TIPS FOR INSTALLATION:

If, during installation, difficulties in screwing may arise, do not strain the screw but unscrew it and then start the process again to let the hinge assembling properly.



ARCA CONCEPT S.r.l.

Via del Mella, 19/21

IT - 25131 Brescia

T. +39 030 7281057

Email: info@arcaconcept.com

www.arcaconcept.com

Product name : Adjustable sensoft system stainless steel hinge H2804 professional wingnut

Code : SWCHNG2804001

Weight : 0 kg

Dimension (LxWxH) : 4 x 4 x 10 cm

DESCRIPTION

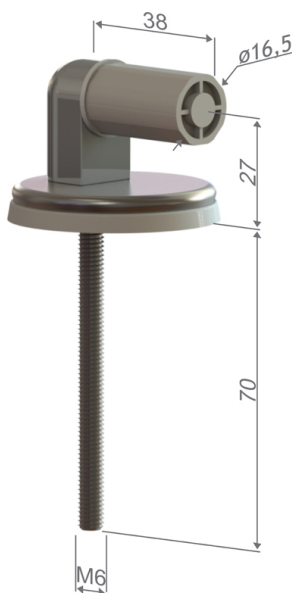
Adjustable sensoft system stainless steel hinge, model **H28**. Stainless steel M6 screws.

Set composed by anti-slip sub-rosette, stainless steel screws and fixing material.

All **ARCA** hinges are interchangeable with all our toilet seats' models

TIPS FOR INSTALLATION:

If, during installation, difficulties in screwing may arise, do not strain the screw but unscrew it and then start the process again to let the hinge assembling properly.



ARCA CONCEPT S.r.l.

Via del Mella, 19/21

IT - 25131 Brescia

T. +39 030 7281057

Email: info@arcaconcept.com

www.arcaconcept.com