

Product name : Universal thermoplast WC seat PANAMA series with H3001 hinge

Code : SWCPAH3001101

Weight : 1 kg

Dimension (LxWxH) : 40 x 46 x 5 cm

DESCRIPTION

White thermoplast universal toilet seat, model **PANAMA**, net weight 1.00 kg. Fixing material included in the package.

For further technical details, see downloadable sheet.

TIPS FOR CLEANING: wash with warm water and dry with soft cloth. The product, although resistant to chemicals, may get damaged.

YOU DO NOT KNOW WHICH TOILET SEAT USE FOR YOUR BATHROOM?

Download our Technical Guide to find your toilet seat and if you are still unsure call us!

ARCA CONCEPT S.r.l.

Via del Mella, 19/21

IT - 25131 Brescia

T. +39 030 7281057

Email: info@arcaconcept.com

www.arcaconcept.com



Product name : Universal thermoplast WC seat PANAMA series with H2501 hinge

Code : SWCPAH2501101

Weight : 1 kg

Dimension (LxWxH) : 40 x 46 x 5 cm

DESCRIPTION

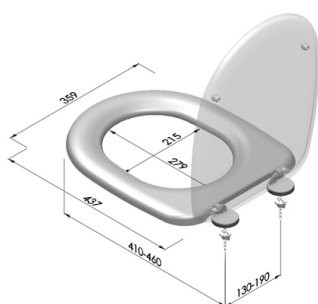
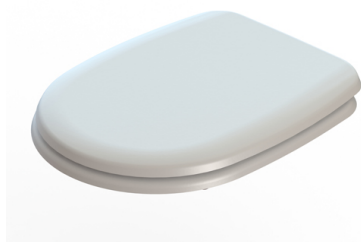
White thermoplast universal toilet seat, model **PANAMA**, net weight 1.00 kg. Fixing material included in the package.

For further technical details, see downloadable sheet.

TIPS FOR CLEANING: wash with warm water and dry with soft cloth. The product, although resistant to chemicals, may get damaged.

YOU DO NOT KNOW WHICH TOILET SEAT USE FOR YOUR BATHROOM?

Download our Technical Guide to find your toilet seat and if you are still unsure call us!



ARCA CONCEPT S.r.l.

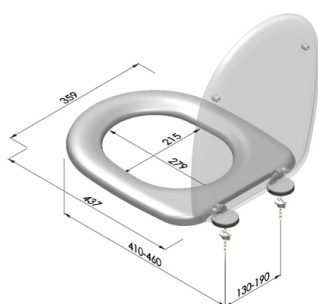
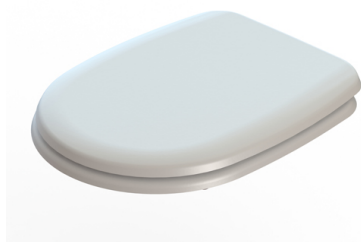
Via del Mella, 19/21

IT - 25131 Brescia

T. +39 030 7281057

Email: info@arcaconcept.com

www.arcaconcept.com



Product name : Universal thermoplast WC seat PANAMA series with H7A01 hinge

Code : SWCPAH7A01101

Weight : 1 kg

Dimension (LxWxH) : 40 x 46 x 5 cm

DESCRIPTION

White thermoplast universal toilet seat, model **PANAMA**, net weight 1.00 kg. Fixing material included in the package.

For further technical details, see downloadable sheet.

TIPS FOR CLEANING: wash with warm water and dry with soft cloth. The product, although resistant to chemicals, may get damaged.

YOU DO NOT KNOW WHICH TOILET SEAT USE FOR YOUR BATHROOM?

Download our Technical Guide to find your toilet seat and if you are still unsure call us!

ARCA CONCEPT S.r.l.

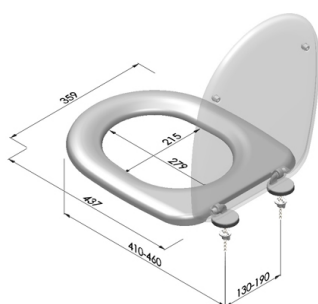
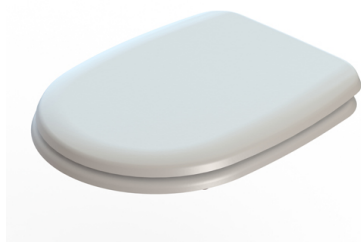
Via del Mella, 19/21

IT - 25131 Brescia

T. +39 030 7281057

Email: info@arcaconcept.com

www.arcaconcept.com



Product name : Universal thermoplast WC seat PANAMA series with H0001 hinge

Code : SWCPAH0001101

Weight : 1 kg

Dimension (LxWxH) : 40 x 46 x 5 cm

DESCRIPTION

White thermoplast universal toilet seat, model **PANAMA**, net weight 1.00 kg. Fixing material included in the package.

For further technical details, see downloadable sheet.

TIPS FOR CLEANING: wash with warm water and dry with soft cloth. The product, although resistant to chemicals, may get damaged.

YOU DO NOT KNOW WHICH TOILET SEAT USE FOR YOUR BATHROOM?

Download our Technical Guide to find your toilet seat and if you are still unsure call us!

ARCA CONCEPT S.r.l.

Via del Mella, 19/21

IT - 25131 Brescia

T. +39 030 7281057

Email: info@arcaconcept.com

www.arcaconcept.com