

Product name : Universal duroplast WC seat LYON series with H3606 hinge

Code : SWCLYH3606101

Weight : 2 kg

Dimension (LxWxH) : 40 x 46 x 5 cm

DESCRIPTION

White duroplast universal toilet seat, model **LYON**, net weight 2,00 kg. Fixing material included in the package.

For further technical details, see downloadable sheet.

TIPS FOR CLEANING: wash with warm water and dry with soft cloth. The product, although resistant to chemicals, may get damaged.

YOU DO NOT KNOW WHICH TOILET SEAT USE FOR YOUR BATHROOM?

Download our Technical Guide to find your toilet seat and if you are still unsure call us!

ARCA CONCEPT S.r.l.

Via del Mella, 19/21

IT - 25131 Brescia

T. +39 030 7281057

Email: info@arcaconcept.com

www.arcaconcept.com



Product name : Universal duroplast WC seat LYON series with H5006 hinge

Code : SWCLYH5006101

Weight : 2 kg

Dimension (LxWxH) : 40 x 46 x 5 cm

DESCRIPTION

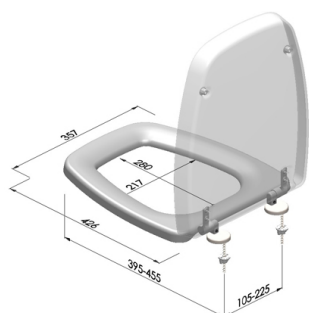
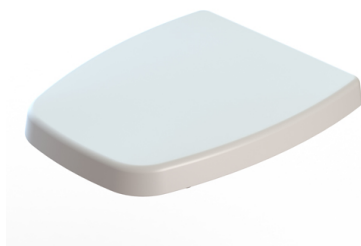
White duroplast universal toilet seat, model **LYON**, net weight 2,00 kg. Fixing material included in the package.

For further technical details, see downloadable sheet.

TIPS FOR CLEANING: wash with warm water and dry with soft cloth. The product, although resistant to chemicals, may get damaged.

YOU DO NOT KNOW WHICH TOILET SEAT USE FOR YOUR BATHROOM?

Download our Technical Guide to find your toilet seat and if you are still unsure call us!



ARCA CONCEPT S.r.l.

Via del Mella, 19/21

IT - 25131 Brescia

T. +39 030 7281057

Email: info@arcaconcept.com

www.arcaconcept.com